

Single Leaf EI₂60 / T60 High Fire Retardant Security Door

Fire Protection	EI₂60 / T60	tested acc. to EN 1634-1
Smoke Control (optional)	S_a, S₂₀₀ / RS	tested acc. to EN 1634-3
Self-Closing (optional)	up to C5	tested acc. to EN 1191
Burglar Protection	RC4	tested acc. to EN 1627

Optional Audited Additional Functions

- Smoke Control	RS (S₂₀₀)	tested acc. to EN 1634-3
- Sound Insulation	up to R_{w,P} 46dB	tested acc. to EN ISO 10140-2
- Bullet Resistance	FB4/FB6	tested acc. to EN 1522
- Air Tight	up to class 4	tested acc. to EN 1026
- Rain- and Fire-Water Tight	class 6A	tested acc. to EN 1027
- Wind load Resistance	up to class C5	tested acc. to EN 1221
- Blast Resistance	up to 20 kPa	tested acc. to EN 13124-1
- Explosion Protection	up to zone 1/21	acc. to EN 1127-1 or ATEX 2014/34/EU
- Stainless Steel		

Range of Dimension

Range of Dimension for Doors **Width from 625 mm to 1500 mm**
Height from 1750 mm to 3000 mm

Range of Dimension for Hatches **Width from 625 mm to 750 mm**
Height from 500 mm to 1750 mm

Technical Specification and Tender Text

Product:	EI₂60 / T60 single leaf high fire retardant security door brand Buchele tested acc. to EN 1634-1 and EN 1627
Door Type:	PLANE Line PL 601 BASIC
Resistance Class:	RC 5
Structural Opening: x mm
Door Leaf:	Double-walled, planar 70 mm thick steel door leaf without hinge embossing, three sides rebated with thick rebate. Without bottom stop. Special insulating inserts fully laid-in and glued. Securing pin screwed in door leaf rebate.
Threshold:	Floor bracket as separation sill. Surface galvanized and welded to the frame.
Frame:	3-sided circumferential rebated corner frame with visible black coated intumescent material in rebate. High-quality multi chamber sealing profile adjustable fixed in the three-sided groove.
Hinges:	Three-part, height adjustable construction hinges with hinge pin retention and ball bearing spacer ring for smooth door movement.

Door Closer:	Door closer system with standard arm acc. to EN 1154 silver coloured mounted on hinge side.
Fitting:	6-point security mortise lock with latch lever function acc. to EN 12209 (prepared for installation of a profile cylinder lock, provided by customer). Security door handle set in acc. to EN 18257 fixed pivoted, stainless steel, in U-shape with rounded long-plate.
Surface:	Door leaf and frame galvanized und primed with 2K-PUR primer (Very High Solid) similar RAL 7035.
Installation:	masonry ≥ 240 mm concrete ≥ 140 mm

Alternative: PLANE Line PL 601 PREMIUM with flush mounted optics

Frame:	3-sided circumferential rebated PLANE Line special corner frame for flush mounted optics on hinge side. With visible, black coated intumescent material in rebate. High-quality multi-chamber sealing profile adjustable fixed in the three-sided groove.
Hinges:	Object hinges type VB-3D 160 adjustable in three dimensions. Fixture element with slide bearings inside for smooth door movement.
Door Closer:	Slide rail door closer system acc. to EN 1154 silver coloured mounted on hinge side.

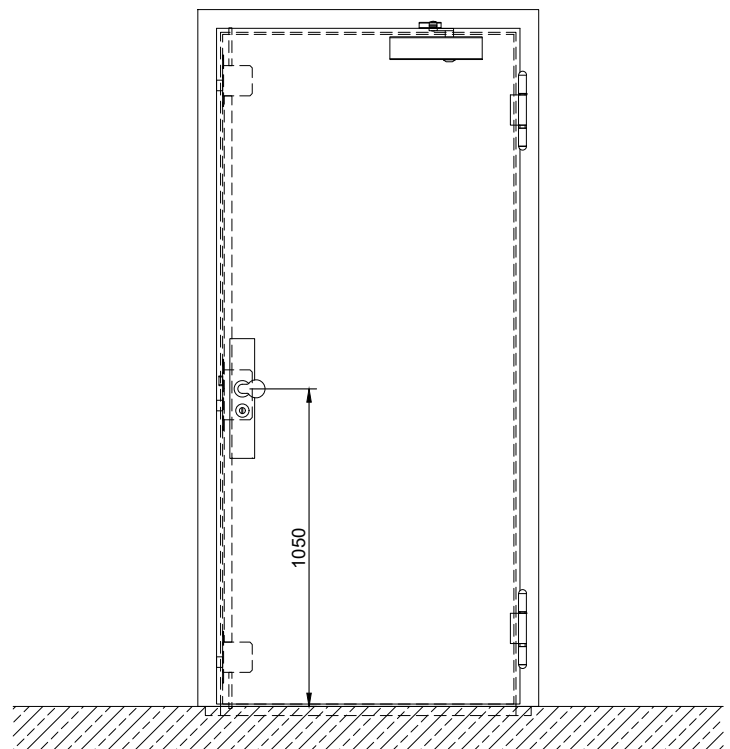
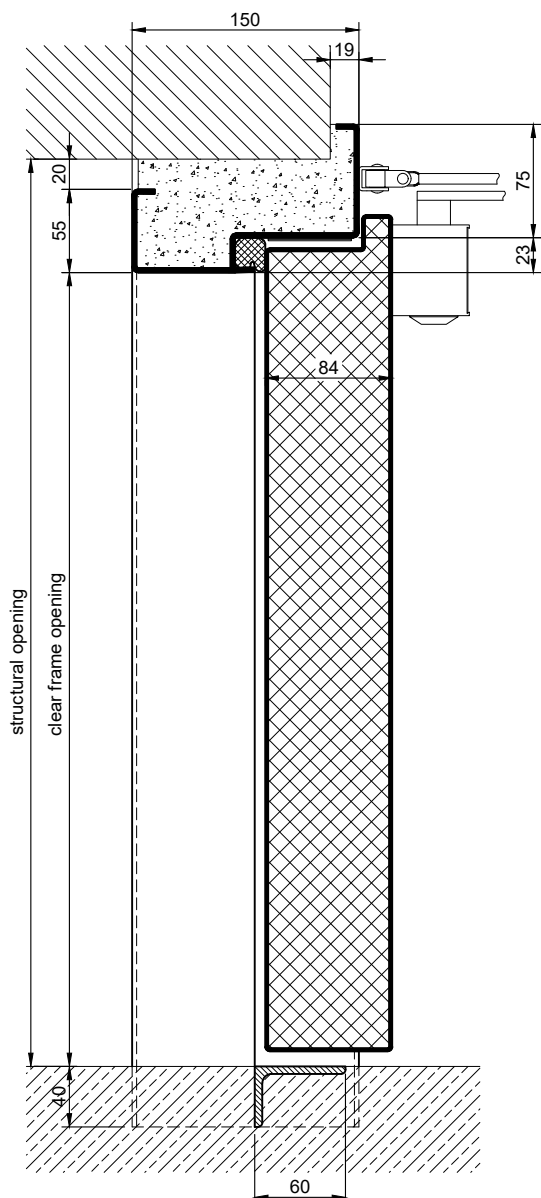
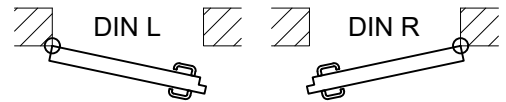
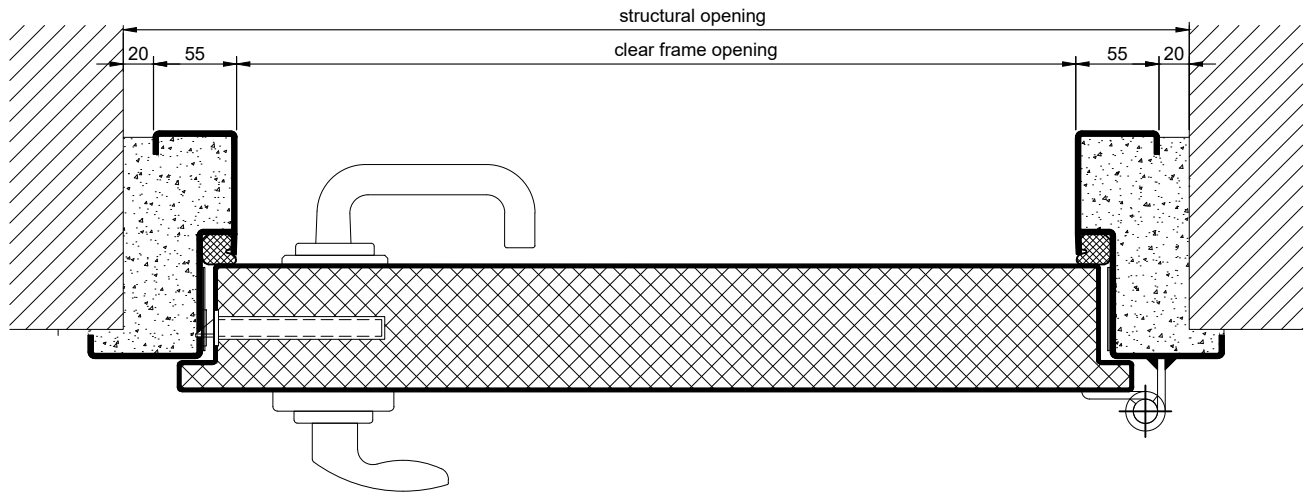
Alternative: PLANE Line PL 601 SUPERIOR with flush mounted optics

Frame:	3-sided circumferential rebated PLANE Line special corner frame for flush mounted optics on hinge side. With visible, black coated intumescent material in rebate. High-quality multi-chamber sealing profile adjustable fixed in the three-sided groove.
Hinges:	Concealed hinge system adjustable in three dimensions.
Door Closer:	Concealed slide rail door closer system acc. to EN 1154 integrated in frame and door leaf.

Supplementary Equipment

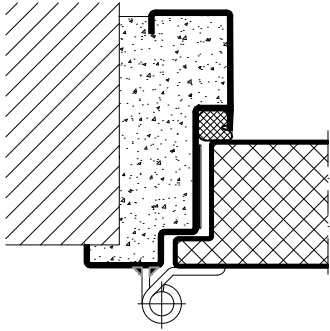
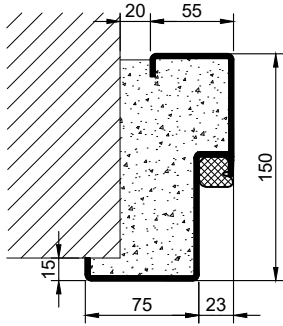
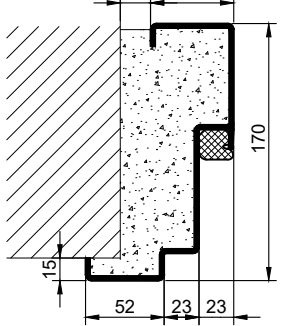
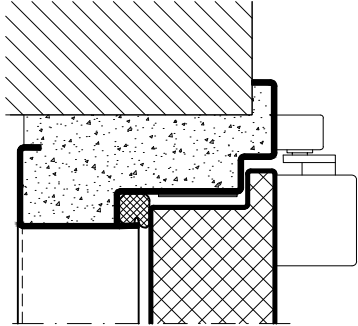
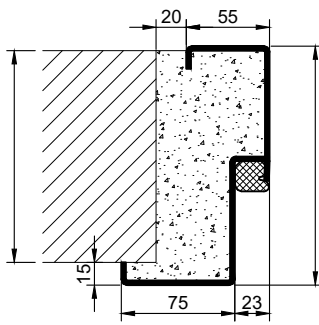
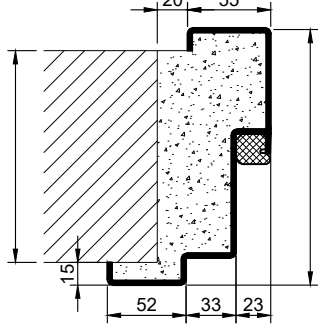
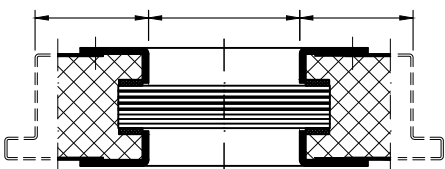
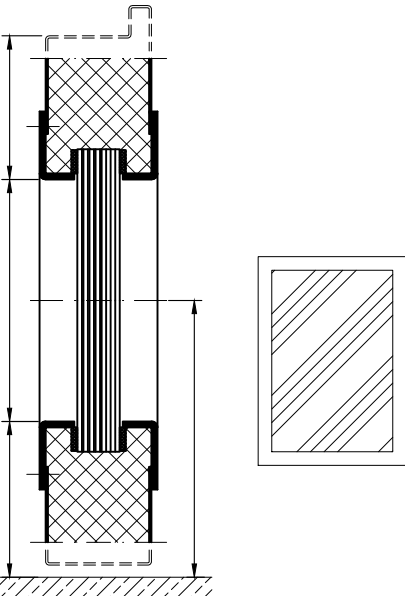
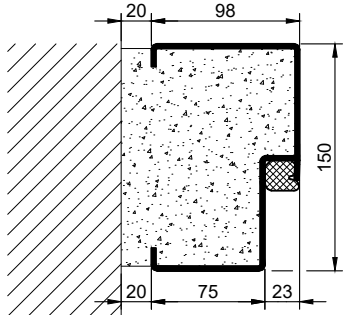
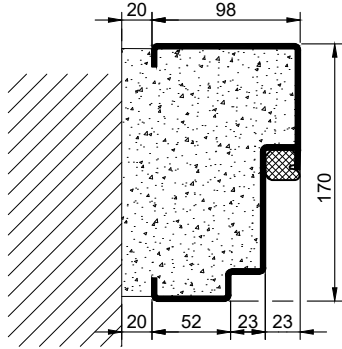
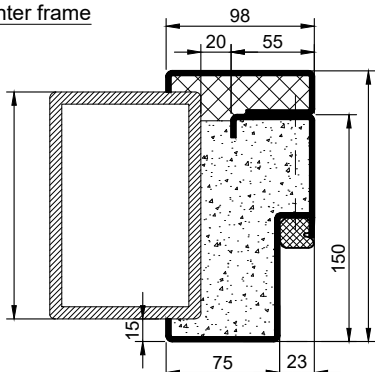
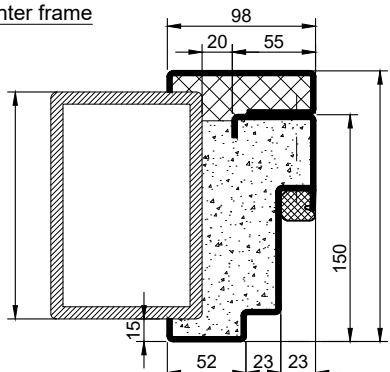
Glazing:	F60 fire-protective glazing fixed with profiled and visible screwed steel glazing bars. Minimum border 125 mm on side and top, base 300 mm.
Stainless Steel:	Material 1.4301 (V2A) or 1.4404 (V4A), Surface mill finish or brushed.
BUCHELE DELUXE:	The exclusive surface coating.

BASIC - Version



1.22.4_PLANE LINE PL 601 RC5_EN

technical modifications reserved - edition 05/2024

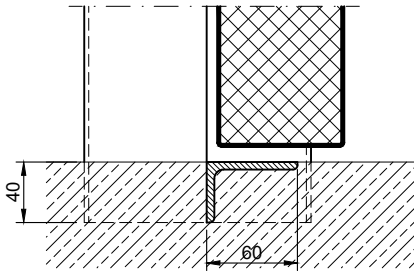
PREMIUM - Version	Frames BASIC	Frames PREMIUM
<p>construction hinges</p> 	<p>corner frame</p> 	<p>corner frame</p> 
<p>slide rail door closer</p> 	<p>encasing frame</p> 	<p>encasing frame</p> 
Optionen		
<p>glazing</p>  	<p>block frame</p> 	<p>block frame</p> 
<p>corner frame with counter frame</p> 	<p>corner frame with counter frame</p> 	

1.22.4 PLANE LINE PL 601 RC5_EN

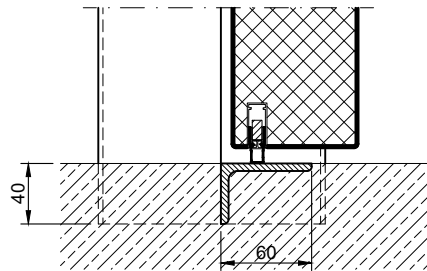
technical modifications reserved - edition 05/2024

Thresholds

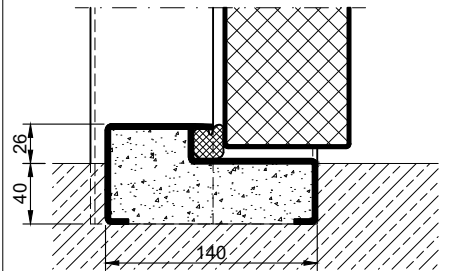
separation sill



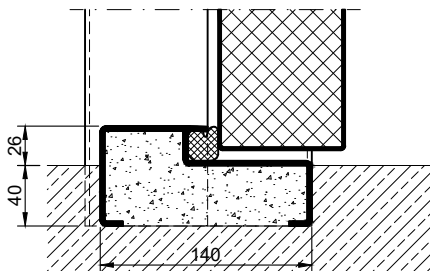
drop seal



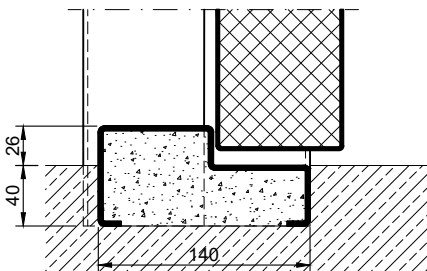
stop sill with seal



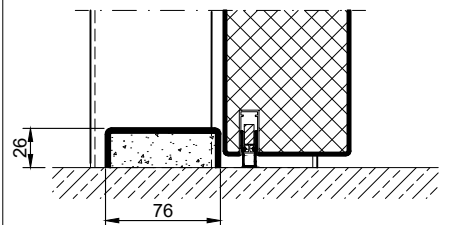
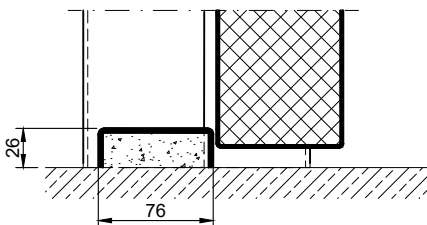
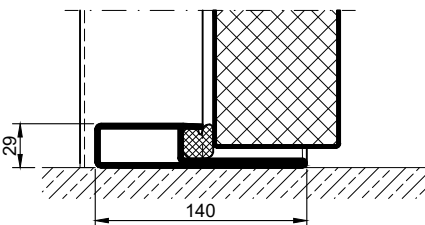
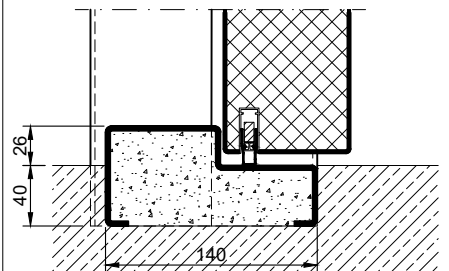
stop sill with seal



stop sill without seal



stop sill with drop seal



full sill

